



Chapel Haddlesey
C of E Primary School
Millfield Road
Chapel Haddlesey
Selby
YO8 8QF

One family branching out together

Executive Headteacher: Mrs S. MacDonald

Tel. no: 01757 270282

Head of School: Mrs R. Lindley

Website: www.chapelhaddleseyschool.org.uk

Email: admin.chapel@wrfed.co.uk

24th October 2023

Newsletter 3

Dear Parents & Carers,

It has been one of the longest Autumn 1 half terms in a few years, but still action-packed and enjoyable. The weather has now turned autumnal, so please ensure that your children are prepared for school every day and attend wearing coats, scarves, hats, and gloves (suitable for school) if necessary. We hope that everyone enjoys the half-term holiday and returns well and ready for a busy Autumn Term 2 on Monday 6th November.

We would like to say a very warm welcome to Melissa, who has joined us recently in Class 3.

Cross Country

The children in KS2 from across the federation came together with 5 other schools in the Sports Cluster on Thursday 12th October 2023 to compete in a Cross-Country competition at Sherburn High School. We were thankful that the sun shone, and the conditions were good. The children were all well behaved and made us proud.

Oscar said: "The Cross Country was very fun although it was breath taking. I tried hard and also am glad that the people got medals as they were super-fast and worked very hard. It was amazing and I enjoyed it very much."

Matthew said: "In Cross Country there was four races, the year 3 and 4 did two laps, some couldn't do it, but they carried on. The 5 and 6 had to do two and a half laps, it was tough, but I carried on to the end and came 12th out of 50 something.

Well done to all the children who took part!



Position	Year 3/4 Girls (1200m)		Year 3/4 Boys (1200m)		Year 5/6 Girls (1500m)		Year 5/6 Boys (1500m)	
	Winning time; 5 min 29sec		Winning time; 4 min 55sec		Winning time; 6 min 38sec		Winning time; 5 min 59sec	
	Name	school	Name	school	Name	school	Name	school
1 st		Barlow		Tockwith		Barlow		Barkston
2 nd		Tockwith		Barkston		Barkston		Burton
3 rd		Tockwith		Tockwith		Barkston	Seth	Chapel
4 th		Barkston		Tockwith		Tockwith		Barkston
5 th		Barkston		Barlow		St.Josephs		Tockwith
6 th		Barkston		Barkston		Barlow		Barkston
7 th	Felicity	Chapel		Burton		Burton		Tockwith
8 th		Burton		Tockwith		Tockwith	Jack	Chapel
9 th		Tockwith		Tockwith		Barkston		Barkston
10 th		Tockwith	Seth	Chapel		Tockwith		Tockwith

Harvest Festival

Beatrice and Munroe from our Worship Group wrote a short piece about our Harvest Festival that took place on Friday 20th October 2023:

At our festival we gathered as a community to celebrate the harvest. All 3 classes showed their work of beautiful poetry and Autumn art. We held a non-uniform day and pupils brought in non-perishable food for our local food bank. This charity was picked by our Worship Group. We were extremely pleased with all the generous donations. Thank you to all the families.



During a cookery lesson with Mrs Smith, the Class 1 children helped to make a traditional Harvest Wheatsheaf Loaf. Each child got to make their own small wheatsheaf and had fun learning how to plait. The best part, as reported by Class 1, was when they all got to try a piece of the baked break – it was delicious!



Class 2 dam building

Class 2 were challenged with the real-world problem of how to stop water flowing by building a dam. The children used different natural building materials found in our school grounds to test their durability. They poured water from pipes to mimic the force of water and enjoyed testing then rebuilding with their knowledge of what worked best.

William said: "I would use more stones next time and not hay."

Spencer said: "I've made a float on top, so if the little ball rises it means the water is coming through."

Leo said: "We need to plug the gaps as the stones are not flat."



Class 3 shadow puppets

The children in Class 3 put on a shadow puppet show for their classmates on Friday afternoon. The children designed their own puppets and were tasked with how to make them stand up. Some used pencils with Blu Tack and some used rulers with paper clips. After writing a story for their puppets they also made props to help with the performance. They performed in groups of 3 from under a table with a torch with the lights out.

Ruby said: "I enjoyed this lesson because it is a bit different to normal lessons and we got to show Class 1 and it made that lesson feel really special. I also enjoyed it because it was a bit more fun and interactive and creative."





Bonfire dinner

There is a slight change to lunch on Tuesday 7th November as we will be hosting a bonfire-themed lunch. The sausage (including the vegetarian option) will now be served in a bread bun along with the potato wedges and the dessert will be a Catherine Wheel biscuit. Please let the school office know if your child would like this meal instead of a packed lunch or panini on this day.



School meals

If you have not returned your lunch menu for after half-term, could you please do so as soon as possible. If you have decided that your child will be on packed lunches going forward, could you please email the school office to confirm this. Paper copies of the menu can be requested via email to admin.chapel@wrfed.co.uk or can be found on our website and an email listing your child's choice for the day is a quick way to return the information. [School Meals | Chapel Haddlesey CE Primary School \(chapelhaddleseyschool.org.uk\)](https://chapelhaddleseyschool.org.uk)

Parents evening

We will be hosting our Autumn Term Parents' Evenings on Monday 13th November and Tuesday 14th November from 3.30pm to 6.00pm. All parents and carers are invited to make an appointment with their child's class teacher via our online booking system SchoolCloud.

SchoolCloud allows you to choose your own appointment times with teachers and you will receive an email confirming your appointments. Please visit the link below which will enable you to set up your own login details and book appointments. <https://chapelhaddleseyschool.schoolcloud.co.uk/> Please email Mrs Charlton at admin.chapel@wrfed.co.uk if you have any problems with your bookings.

The system will open on Friday 27th October at 12.00noon and closes at 23.55 on Sunday 12th November 2023.

Pumpkin carving competition



The school will be hosting a pumpkin carving competition. The entry fee is **£1, payable on ParentPay**. **The pumpkins must be brought into school on Thursday 26th October**, there will be a prize per class.

Children in Need

We would like to support Children in Need this year by asking children to wear spotty or colourful clothing on Friday 17th November. There is no need to buy anything new to wear, but we would ask for monetary donations to be made on ParentPay; a payment link will be shared closer to the time and all the money will go directly to the charity.

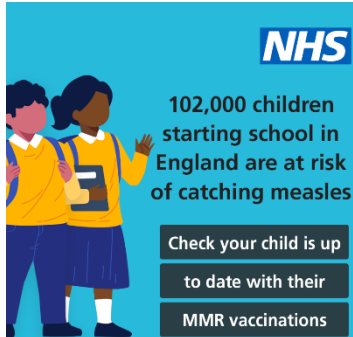




Remembrance service

On Friday 10th November we would like to invite families to join us in the Community Garden from 10.45am for a short remembrance service.

MMR NHS Information



Over 102,000 children starting primary school in England are at risk of catching measles. With millions of children across the country going back to school this week, NHS England is urging parents to check that their children are up to date with their MMR (Measles, Mumps and Rubella) vaccinations in the wake of measles cases rising across the country. Childhood vaccination rates have fallen over the past ten years and this week statistics show that over 102,000 children aged four and five years old starting in reception are not protected against catching measles, mumps and rubella. Measles is highly infectious and if left unvaccinated, nine out of ten children in a classroom can



catch the disease if just one child is infectious. If you are unsure if you or your child are up to date, check your child's red book or GP records and make an appointment to catch up any missed doses. For more information on the NHS vaccination schedule, please visit [NHS vaccinations and when to have them - NHS \(www.nhs.uk\)](https://www.nhs.uk)

IMPORTANT - Applications for Secondary School Places for September 2024

Please note that the window for applying for a secondary school place for your Year 6 child is ending and the deadline is Tuesday 31st October 2023. To submit an online application for your child at the high school of your choice, please visit the following website: - [School admissions | North Yorkshire Council](https://www.northyorkshire.gov.uk/school-admissions)

Good attendance is linked to success in all aspects of life!

Whole school attendance target is: 97%

This fortnight whole school attendance was 94.29%

Class	Percentage
Class 1	94.83%
Class 2	97.00%
Class 3	90.83%

There were 56 children in the 100% club for this fortnight.



News From St Wilfrid's Church

Autumn Fair at St Wilfrid's Church, Brayton on Saturday, 11th November from 10.00am until 1.00pm.

Stalls will include a raffle, tombola, toiletries, nearly new children's things and a café.

Please pop along and pick up a bargain!

**Pop Up
Inspire Youth
Mobile Youth Club**

Find us: Thursday 2nd November
11.30–1pm @ Barwic Parade &
1.30–3pm on the Abbey Pavement
(outside Selby Abbey), Selby

Offering information, support, a safe space, positive activities, (and much more!) for young people provided by qualified youth workers

All welcome aged 8 upwards free to attend

SAFE SPACES

Refreshments included for all attending, see you there!

NO BOOKING NEEDED– JUST TURN UP



www.inspireyouth.uk



INSPIRE YOUTH YORKSHIRE

For more information contact
info@inspireyouth.uk
07547 287892

FREE HALF TERM ACTIVITY

10.00 till 3.00

YOUTH FOOTBALL AND ACTIVITY SESSIONS


Brought to you by  

Coaching, skill session & matches

DATE 30TH OCT

All ages welcome
@Selby leisure centre

Agility stations. Reaction, speed drill and a team challenges - With North Yorkshire sport



Yours sincerely,

Mrs Lindley

Deputy Headteacher



Diary Dates

Thursday 26 th October 2023	<ul style="list-style-type: none"> Pumpkin carving competition
Friday 27 th October 2023	<ul style="list-style-type: none"> Class 3 Trip to Eden Camp – pupils to be in school by 8.30am School closes for October half-term PTA Halloween Party 6.00pm in the hall
Tuesday 31 st October 2023	<ul style="list-style-type: none"> Closing date for High School applications
Monday 6 th November 2023	<ul style="list-style-type: none"> School re-opens
Friday 10 th November 2023	<ul style="list-style-type: none"> Remembrance service in Community Garden
Friday 17 th November 2023	<ul style="list-style-type: none"> Children In Need
Friday 24 th November 2023	<ul style="list-style-type: none"> Celebration Worship 9.00am
Saturday 25 th November 2023	<ul style="list-style-type: none"> PTA Christmas Fair – Village Hall
Friday 1 st December 2023	<ul style="list-style-type: none"> Flu Vaccinations (more information to follow) Nursery/Reception Open Morning 9.30-11.00
Friday 8 th December 2023	<ul style="list-style-type: none"> Christmas dinner and Christmas Jumper Day PTA Wreath Making 7.30pm – Village Hall
Friday 22 nd December 2023	<ul style="list-style-type: none"> Celebration Worship 9.00am School closes for Christmas
Monday 8 th January 2024	<ul style="list-style-type: none"> Training day – School closed
Tuesday 9 th January 2024	<ul style="list-style-type: none"> School re-opens
Monday 15 th January 2025	<ul style="list-style-type: none"> Closing date for Primary School applications Reception 2024
Friday 26 th January 2024	<ul style="list-style-type: none"> Phototronics taking school photos (with siblings from 8.30am) <p>Please note there is no Celebration Worship as the hall will be in use.</p>
Friday 9 th February 2024	<ul style="list-style-type: none"> Celebration Worship 9.00am Non-uniform day – charity tbc School closes for February half-term
Monday 19 th February 2024	<ul style="list-style-type: none"> School re-opens
Wednesday 21 st February 2024	<ul style="list-style-type: none"> Young Voices – Sheffield Arena
Monday 11 th March 2024	<ul style="list-style-type: none"> Robinwood Residential depart
Wednesday 13 th March 2024	<ul style="list-style-type: none"> Robinwood Residential return
Friday 22 nd March 2024	<ul style="list-style-type: none"> Celebration Worship 9.00am School closes for Easter
Monday 8 th April 2024	<ul style="list-style-type: none"> Training day – School closed
Tuesday 9 th April 2024	<ul style="list-style-type: none"> School re-opens



Friday 26 th April 2024	<ul style="list-style-type: none"> • Celebration Worship 9.00am
Monday 6 th May 2024	<ul style="list-style-type: none"> • Bank holiday – School closed
Monday 13 th May to Thursday 16 th May 2023	<ul style="list-style-type: none"> • KS2 SATs
Friday 24 th May 2024	<ul style="list-style-type: none"> • Non-uniform day – charity tbc • Celebration Worship 9.00am • School closes for May half-term
Monday 3 rd June 2024	<ul style="list-style-type: none"> • School re-opens
Friday 28 th June 2024	<ul style="list-style-type: none"> • Celebration Worship 2024
Friday 19 th July 2024	<ul style="list-style-type: none"> • Celebration Worship 2024 • School closes for summer holiday
Monday 22 nd July 2024	<ul style="list-style-type: none"> • Training day – School closed

